

Prices

US dollars per million Btu	LNG		Natural gas					Crude oil
	Japan CIF ¹	Japan Korea Marker (JKM) ²	Average German Import Price ³	UK (Heren NBP Index) ⁴	Netherlands TTF (DA Heren Index) ⁴	US Henry Hub ⁵	Canada (Alberta) ⁶	OECD countries CIF ⁶
1989	3.28	-	2.00	-	-	1.70	-	3.01
1990	3.64	-	2.78	-	-	1.64	1.05	3.82
1991	3.99	-	3.23	-	-	1.49	0.89	3.33
1992	3.62	-	2.70	-	-	1.77	0.98	3.19
1993	3.52	-	2.51	-	-	2.12	1.69	2.82
1994	3.18	-	2.35	-	-	1.92	1.45	2.70
1995	3.46	-	2.43	-	-	1.69	0.89	2.96
1996	3.66	-	2.50	1.87	-	2.76	1.12	3.54
1997	3.91	-	2.66	1.96	-	2.53	1.36	3.29
1998	3.05	-	2.33	1.86	-	2.08	1.42	2.16
1999	3.14	-	1.86	1.58	-	2.27	2.00	2.98
2000	4.72	-	2.91	2.71	-	4.23	3.75	4.83
2001	4.64	-	3.67	3.17	-	4.07	3.61	4.08
2002	4.27	-	3.21	2.37	-	3.33	2.57	4.17
2003	4.77	-	4.06	3.33	-	5.63	4.83	4.89
2004	5.18	-	4.30	4.46	-	5.85	5.03	6.27
2005	6.05	-	5.83	7.38	6.07	8.79	7.25	8.74
2006	7.14	-	7.87	7.87	7.46	6.76	5.83	10.66
2007	7.73	-	7.99	6.01	5.93	6.95	6.17	11.95
2008	12.55	-	11.60	10.79	10.66	8.85	7.99	16.76
2009	9.06	5.28	8.53	4.85	4.96	3.89	3.38	10.41
2010	10.91	7.72	8.03	6.56	6.77	4.39	3.69	13.47
2011	14.73	14.02	10.49	9.04	9.26	4.01	3.47	18.55
2012	16.75	15.12	10.93	9.46	9.45	2.76	2.27	18.82
2013	16.17	16.56	10.73	10.64	9.75	3.71	2.93	18.25
2014	16.33	13.86	9.11	8.25	8.14	4.35	3.87	16.80
2015	10.31	7.45	6.72	6.53	6.44	2.60	2.01	8.77
2016	6.94	5.72	4.93	4.69	4.54	2.46	1.55	7.04
2017	8.10	7.13	5.62	5.80	5.72	2.96	1.60	8.97
2018	10.05	9.76	6.62	8.06	7.90	3.13	1.12	11.68
2019	9.94	5.49	5.25	4.47	4.45	2.53	1.27	10.82

¹Source: EDMC Energy Trend.

²Source: S&P Global Platts ©2020, S&P Global Inc.

³Source: 1986-1990 German Federal Statistical Office, 1991-2019 German Federal Office of Economics and Export Control (BAFA).

⁴Source: ICIS Heren Energy Ltd.

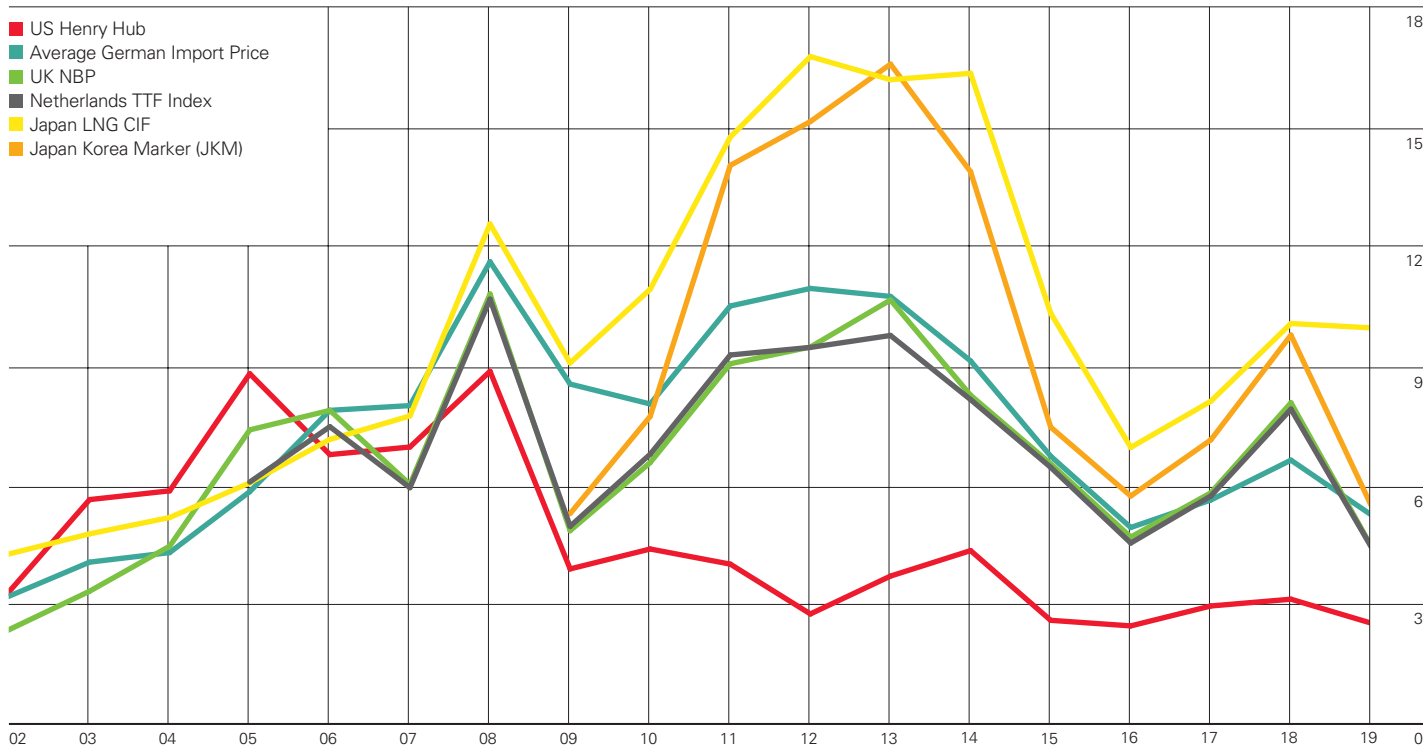
⁵Source: Energy Intelligence Group, *Natural Gas Week*.

⁶Source: ©OECD/IEA 2020, Oil, Gas, Coal and Electricity, Quarterly Statistics www.iea.org/statistics.

Note: CIF = cost+insurance+freight (average prices).

Prices

\$/mmBtu



Natural gas: LNG imports

Billion cubic metres	2009	2010	2011	2012	2013	2014	2015	2016	2017	2018	2019	Growth rate per annum		Share 2019
												2019	2008-18	
Canada	1.0	2.0	3.2	1.6	1.0	0.5	0.6	0.3	0.4	0.6	0.5	-13.2%	n/a	0.1%
Mexico	3.7	6.1	3.8	4.9	7.8	9.3	6.8	5.6	6.6	6.9	6.6	-4.4%	6.2%	1.4%
US	12.6	12.1	9.9	4.9	2.7	1.7	2.5	2.4	2.2	2.1	1.5	-30.9%	-14.2%	0.3%
Total North America	17.3	20.2	16.8	11.4	11.4	11.5	10.0	8.3	9.2	9.6	8.6	-10.8%	-3.4%	1.8%
Argentina	1.0	1.9	3.7	4.7	6.3	6.2	5.6	5.1	4.6	3.6	1.7	-51.9%	23.7%	0.4%
Brazil	0.4	2.8	0.7	3.5	5.2	7.1	6.8	2.6	1.7	2.9	3.2	12.2%	n/a	0.7%
Chile	0.7	3.1	3.7	4.0	3.8	3.5	3.7	4.5	4.4	4.3	3.3	-22.2%	n/a	0.7%
Other S. & Cent. America	1.4	1.4	1.9	2.4	2.8	2.8	2.8	3.0	2.8	3.7	4.8	29.5%	10.7%	1.0%
Total S. & Cent. America	3.5	9.2	9.9	14.6	18.1	19.6	18.9	15.2	13.5	14.5	13.1	-9.5%	23.4%	2.7%
Belgium	6.8	6.5	6.3	4.1	3.1	2.9	3.6	2.4	1.3	3.3	7.2	117.9%	0.9%	1.5%
France	13.3	14.7	14.4	9.8	8.3	6.9	6.4	9.1	10.9	12.7	22.9	79.8%	-0.1%	4.7%
Italy	3.0	9.3	9.1	7.1	5.8	4.5	5.9	5.9	8.2	8.2	13.5	64.2%	17.5%	2.8%
Spain	27.5	28.2	23.9	21.4	15.7	16.2	13.7	13.8	16.6	15.0	21.9	46.0%	-6.6%	4.5%
Turkey	6.0	7.8	5.9	7.6	5.9	7.1	7.5	7.6	10.9	11.4	12.9	12.4%	7.5%	2.7%
United Kingdom	10.1	18.8	24.7	13.9	9.2	11.2	13.7	10.7	6.6	7.2	18.0	151.9%	24.3%	3.7%
Other EU	3.7	3.9	4.9	4.4	3.7	3.3	5.2	6.9	10.2	13.4	23.4	74.7%	13.6%	4.8%
Rest of Europe	-	†	-	†	-	†	-	†	0.1	†	†	26.8%	n/a	♦
Total Europe	70.5	89.1	89.2	68.2	51.8	52.1	56.0	56.4	64.7	71.3	119.8	68.1%	2.2%	24.7%
Egypt	-	-	-	-	-	-	3.9	10.7	8.3	3.2	-	-100.0%	n/a	-
Kuwait	0.9	2.8	3.0	2.8	2.3	3.6	4.3	4.7	4.8	4.3	5.1	19.0%	n/a	1.1%
United Arab Emirates	-	0.2	1.4	1.4	1.6	1.6	2.9	4.2	3.0	1.0	1.6	55.0%	n/a	0.3%
Other Middle East & Africa	-	-	-	-	0.5	0.1	2.7	4.8	5.3	4.0	2.8	-30.9%	n/a	0.6%
Total Middle East & Africa	0.9	3.0	4.4	4.2	4.3	5.3	13.7	24.5	21.4	12.5	9.5	-24.1%	n/a	2.0%
China	8.0	13.0	16.9	20.1	25.1	27.3	27.0	36.8	52.9	73.5	84.8	15.4%	31.8%	17.5%
India	13.0	11.5	17.4	18.4	18.0	19.1	20.0	24.3	26.1	30.6	32.9	7.4%	10.5%	6.8%
Japan	88.9	96.4	108.6	119.8	120.4	121.8	115.9	113.6	113.9	113.0	105.5	-6.6%	1.7%	21.7%
Malaysia	-	-	-	-	2.0	2.2	2.2	1.5	2.0	1.8	3.3	85.7%	n/a	0.7%
Pakistan	-	-	-	-	-	-	1.5	4.0	6.1	9.4	11.8	25.6%	n/a	2.4%
Singapore	-	-	-	-	1.3	2.6	3.0	3.2	4.1	4.5	5.0	10.1%	n/a	1.0%
South Korea	35.3	45.0	47.7	49.7	55.3	51.8	45.8	46.3	51.4	60.2	55.6	-7.6%	4.6%	11.5%
Taiwan	12.4	15.0	16.3	17.1	17.2	18.6	19.6	20.4	22.7	22.9	22.8	-0.5%	6.2%	4.7%
Thailand	-	-	1.1	1.4	2.0	1.9	3.6	3.9	5.2	6.0	6.7	11.5%	n/a	1.4%
Other Asia Pacific	-	-	-	0.1	-	-	-	-	-	0.8	5.7	576.6%	n/a	1.2%
Total Asia Pacific	157.5	180.9	207.9	226.6	241.2	245.2	238.5	253.9	284.6	322.7	334.1	3.5%	7.1%	68.9%
Total LNG imports	249.7	302.4	328.3	324.9	326.8	333.6	337.1	358.3	393.3	430.6	485.1	12.7%	6.2%	100.0%

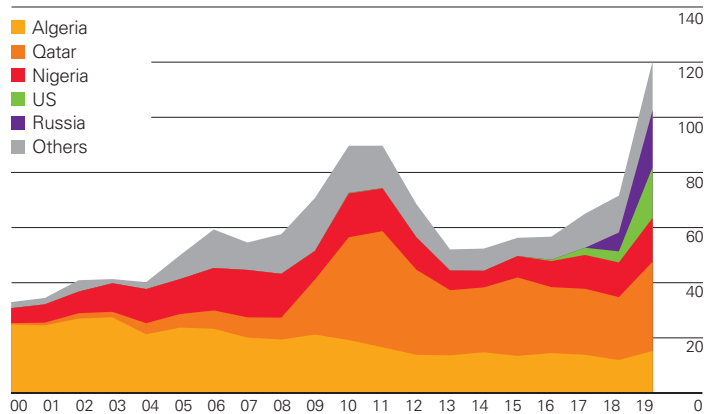
Gross LNG trade
†Less than 0.05.

♦Less than 0.05%.
n/a not available.

Source: includes GIIGNL, IHS.

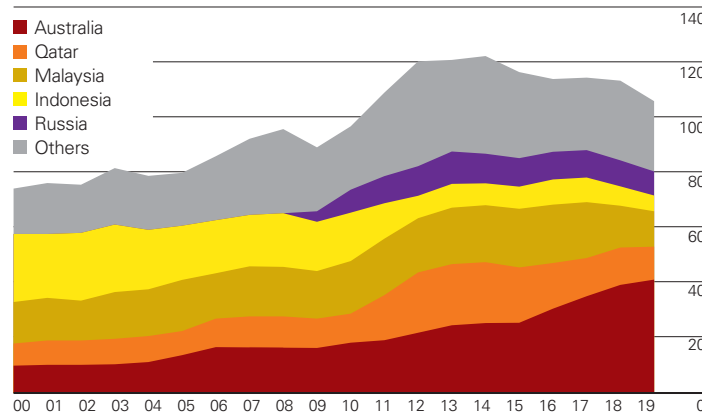
LNG imports by source: Europe

Billion cubic metres



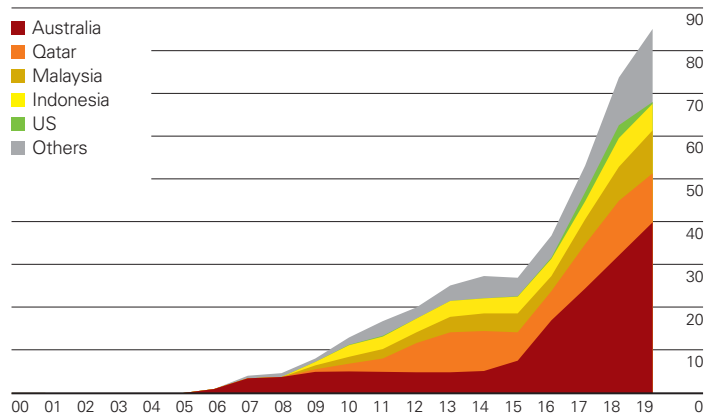
LNG imports by source: Japan

Billion cubic metres



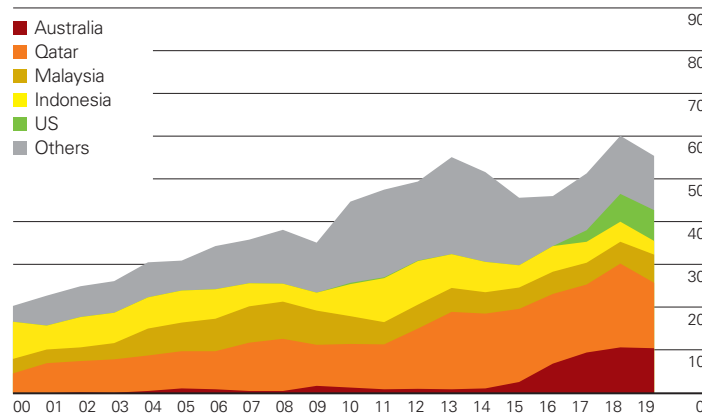
LNG imports by source: China

Billion cubic metres



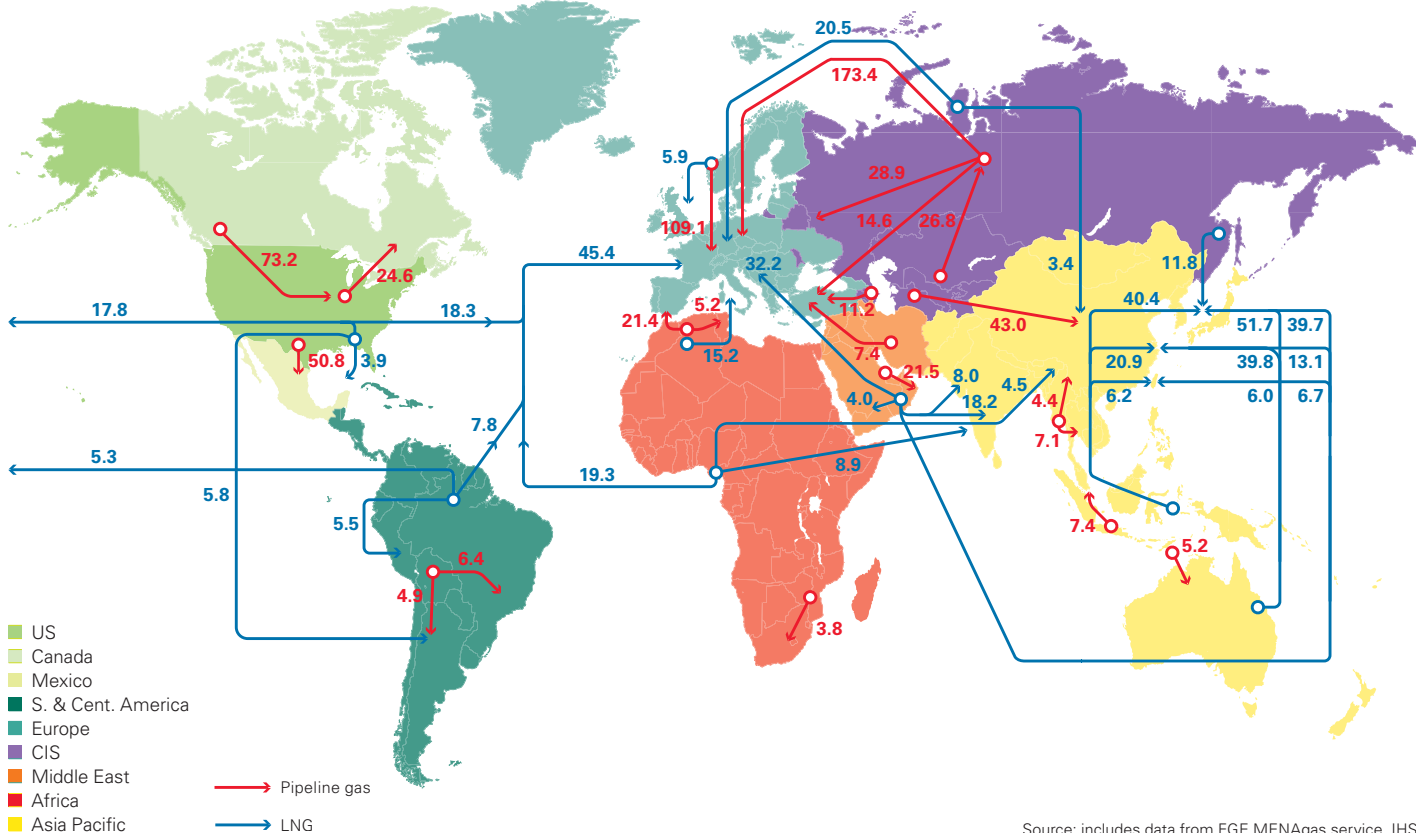
LNG imports by source: South Korea

Billion cubic metres



Major trade movements 2019

Trade flows worldwide (billion cubic metres)



Source: includes data from FGE MENAgas service, IHS.

Natural gas: Trade movements 2019 by pipeline

To	From																			Total imports					
	Canada	Mexico	US	Bolivia	Other S. & Cent. America	Netherlands	Norway	Other Europe	Azerbaijan	Kazakhstan	Russian Federation	Turkmenistan	Uzbekistan	Iran	Qatar	Other Middle East	Algeria	Libya	Other Africa		Indonesia	Myanmar	Other Asia Pacific		
Canada	-	-	24.6	-	-	-	-	-	-	-	-	-	-	-	-	-	-	-	-	-	-	-	-	24.6	
Mexico	-	-	50.8	-	-	-	-	-	-	-	-	-	-	-	-	-	-	-	-	-	-	-	-	50.8	
US	73.2	0.1	-	-	-	-	-	-	-	-	-	-	-	-	-	-	-	-	-	-	-	-	-	73.3	
North America	73.2	0.1	75.4	-	-	-	-	-	-	-	-	-	-	-	-	-	-	-	-	-	-	-	-	148.7	
Argentina	-	-	-	4.9	-	-	-	-	-	-	-	-	-	-	-	-	-	-	-	-	-	-	-	4.9	
Brazil	-	-	-	6.4	-	-	-	-	-	-	-	-	-	-	-	-	-	-	-	-	-	-	-	6.4	
Other S. & Cent. America	-	-	-	-	0.7	-	-	-	-	-	-	-	-	-	-	-	-	-	-	-	-	-	-	0.7	
S. & Cent. America	-	-	-	11.3	0.7	-	-	-	-	-	-	-	-	-	-	-	-	-	-	-	-	-	-	12.0	
Belgium	-	-	-	-	-	6.6	5.1	0.9	-	-	-	-	-	-	-	-	-	-	-	-	-	-	-	12.6	
France	-	-	-	-	-	4.4	19.3	5.8	-	-	7.8	-	-	-	-	-	-	-	-	-	-	-	-	37.2	
Germany	-	-	-	-	-	23.4	27.8	2.9	-	-	55.6	-	-	-	-	-	-	-	-	-	-	-	-	109.6	
Italy	-	-	-	-	-	1.2	2.7	14.2	-	-	20.7	-	-	-	-	-	9.7	5.4	-	-	-	-	-	54.1	
Netherlands	-	-	-	-	-	-	25.3	6.7	-	-	8.0	-	-	-	-	-	-	-	-	-	-	-	-	40.0	
Spain	-	-	-	-	-	-	1.8	2.8	-	-	-	-	-	-	-	-	11.4	-	-	-	-	-	-	16.0	
Turkey	-	-	-	-	-	-	-	-	9.2	-	14.6	-	-	-	-	-	-	-	-	-	-	-	-	31.3	
Ukraine	-	-	-	-	-	-	-	11.0	-	-	-	-	-	-	-	-	-	-	-	-	-	-	-	11.0	
United Kingdom	-	-	-	-	-	1.6	26.6	0.4	-	-	4.7	-	-	-	-	-	-	-	-	-	-	-	-	33.2	
Other EU	-	-	-	-	-	1.0	0.4	37.5	-	-	73.9	-	-	-	-	-	0.4	-	-	-	-	-	-	113.2	
Rest of Europe	-	-	-	-	-	0.1	-	8.3	2.0	-	2.7	-	-	-	-	-	-	-	-	-	-	-	-	13.0	
Europe	-	-	-	-	-	38.2	109.1	90.5	11.2	-	188.0	-	-	7.4	-	-	21.4	5.4	-	-	-	-	-	471.3	
Belarus	-	-	-	-	-	-	-	-	-	-	19.0	-	-	-	-	-	-	-	-	-	-	-	-	19.0	
Kazakhstan	-	-	-	-	-	-	-	-	-	-	5.1	-	1.8	-	-	-	-	-	-	-	-	-	-	6.9	
Russian Federation	-	-	-	-	-	-	-	-	-	20.6	-	-	6.2	-	-	-	-	-	-	-	-	-	-	26.8	
Other CIS	-	-	-	-	-	-	-	-	-	0.4	4.8	-	0.4	0.4	-	-	-	-	-	-	-	-	-	5.9	
CIS	-	-	-	-	-	-	-	-	-	20.9	28.9	-	8.4	0.4	-	-	-	-	-	-	-	-	-	58.5	
United Arab Emirates	-	-	-	-	-	-	-	-	-	-	-	-	-	-	19.5	-	-	-	-	-	-	-	-	19.5	
Other Middle East	-	-	-	-	-	-	-	-	0.3	-	-	-	-	9.1	2.0	0.1	-	-	1.4	-	-	-	-	13.0	
Middle East	-	-	-	-	-	-	-	-	0.3	-	-	-	-	9.1	21.5	0.1	-	-	1.4	-	-	-	-	32.5	
South Africa	-	-	-	-	-	-	-	-	-	-	-	-	-	-	-	-	-	-	-	-	-	-	-	3.8	
Other Africa	-	-	-	-	-	-	-	-	-	-	-	-	-	-	-	-	5.2	-	3.8	-	-	-	-	6.0	
Africa	-	-	-	-	-	-	-	-	-	-	-	-	-	-	-	-	5.2	-	4.6	-	-	-	-	9.8	
Australia	-	-	-	-	-	-	-	-	-	-	-	-	-	-	-	-	-	-	-	-	-	5.2	-	5.2	
China	-	-	-	-	-	-	-	-	-	6.5	0.3	31.6	4.9	-	-	-	-	-	-	-	-	4.4	-	-	47.7
Malaysia	-	-	-	-	-	-	-	-	-	-	-	-	-	-	-	-	-	-	-	-	0.6	-	-	0.6	
Singapore	-	-	-	-	-	-	-	-	-	-	-	-	-	-	-	-	-	-	-	-	6.8	-	1.3	8.1	
Thailand	-	-	-	-	-	-	-	-	-	-	-	-	-	-	-	-	-	-	-	-	7.1	-	-	7.1	
Asia Pacific	-	-	-	-	-	-	-	-	-	6.5	0.3	31.6	4.9	-	-	-	-	-	-	-	7.4	11.5	6.5	68.7	
Total exports	73.2	0.1	75.4	11.3	0.7	38.2	109.1	90.5	11.5	27.5	217.2	31.6	13.2	16.9	21.5	0.1	26.7	5.4	6.0	7.4	11.5	6.5	6.5	801.5	

Source: includes data from FGE MENAgas service, IHS.

Note: As far as possible, the data above represents standard cubic metres (measured at 15°C and 1013 mbar) and has been standardized using a gross calorific value (GCV) of 40 MJ/m³.

Total proved reserves at end 2019

Million tonnes	Anthracite and bituminous	Sub-bituminous and lignite	Total	Share of Total	R/P ratio
Canada	4346	2236	6582	0.6%	130
Mexico	1160	51	1211	0.1%	108
US	219534	30003	249537	23.3%	390
Total North America	225040	32290	257330	24.1%	367
Brazil	1547	5049	6596	0.6%	*
Colombia	4554	–	4554	0.4%	55
Venezuela	731	–	731	0.1%	*
Other S. & Cent. America	1784	24	1808	0.2%	*
Total S. & Cent. America	8616	5073	13689	1.3%	152
Bulgaria	192	2174	2366	0.2%	153
Czech Republic	413	2514	2927	0.3%	71
Germany	–	35900	35900	3.4%	268
Greece	–	2876	2876	0.3%	105
Hungary	276	2633	2909	0.3%	425
Poland	21067	5865	26932	2.5%	240
Romania	11	280	291	♦	13
Serbia	402	7112	7514	0.7%	193
Spain	868	319	1187	0.1%	*
Turkey	550	10975	11525	1.1%	140
Ukraine	32039	2336	34375	3.2%	*
United Kingdom	26	–	26	♦	12
Other Europe	1109	5172	6281	0.6%	141
Total Europe	56953	78156	135109	12.6%	244
Kazakhstan	25605	–	25605	2.4%	222
Russian Federation	71719	90447	162166	15.2%	369
Uzbekistan	1375	–	1375	0.1%	339
Other CIS	1509	–	1509	0.1%	331
Total CIS	100208	90447	190655	17.8%	338
South Africa	9893	–	9893	0.9%	39
Zimbabwe	502	–	502	♦	215
Other Africa	4376	66	4442	0.4%	202
Middle East	1203	–	1203	0.1%	*
Total Middle East & Africa	15974	66	16040	1.5%	57
Australia	72571	76508	149079	13.9%	294
China	133467	8128	141595	13.2%	37
India	100858	5073	105931	9.9%	140
Indonesia	28163	11728	39891	3.7%	65
Japan	340	10	350	♦	462
Mongolia	1170	1350	2520	0.2%	44
New Zealand	825	6750	7575	0.7%	*
Pakistan	207	2857	3064	0.3%	481
South Korea	326	–	326	♦	300
Thailand	–	1063	1063	0.1%	76
Vietnam	3116	244	3360	0.3%	73
Other Asia Pacific	1333	726	2059	0.2%	32
Total Asia Pacific	342376	114437	456813	42.7%	77
Total World	749167	320469	1069636	100.0%	132
of which: OECD	324066	177130	501196	46.9%	308
Non-OECD	425101	143339	568440	53.1%	88
European Union	23434	53051	76485	7.2%	209

*More than 500 years.

♦Less than 0.05%.

Source: Federal Institute for Geosciences and Natural Resources (BGR) Energy Study 2020.

Notes: Total proved reserves of coal – generally taken to be those quantities that geological and engineering information indicates with reasonable certainty can be recovered in the future from known reservoirs under existing economic and operating conditions. The data series for total proved coal reserves does not necessarily meet the definitions, guidelines and practices used for determining proved reserves at company level, for instance as published by the US Securities and Exchange Commission, nor does it necessarily represent bp's view of proved reserves by country.

Reserves-to-production (R/P) ratio – if the reserves remaining at the end of any year are divided by the production in that year, the result is the length of time that those remaining reserves would last if production were to continue at that rate.

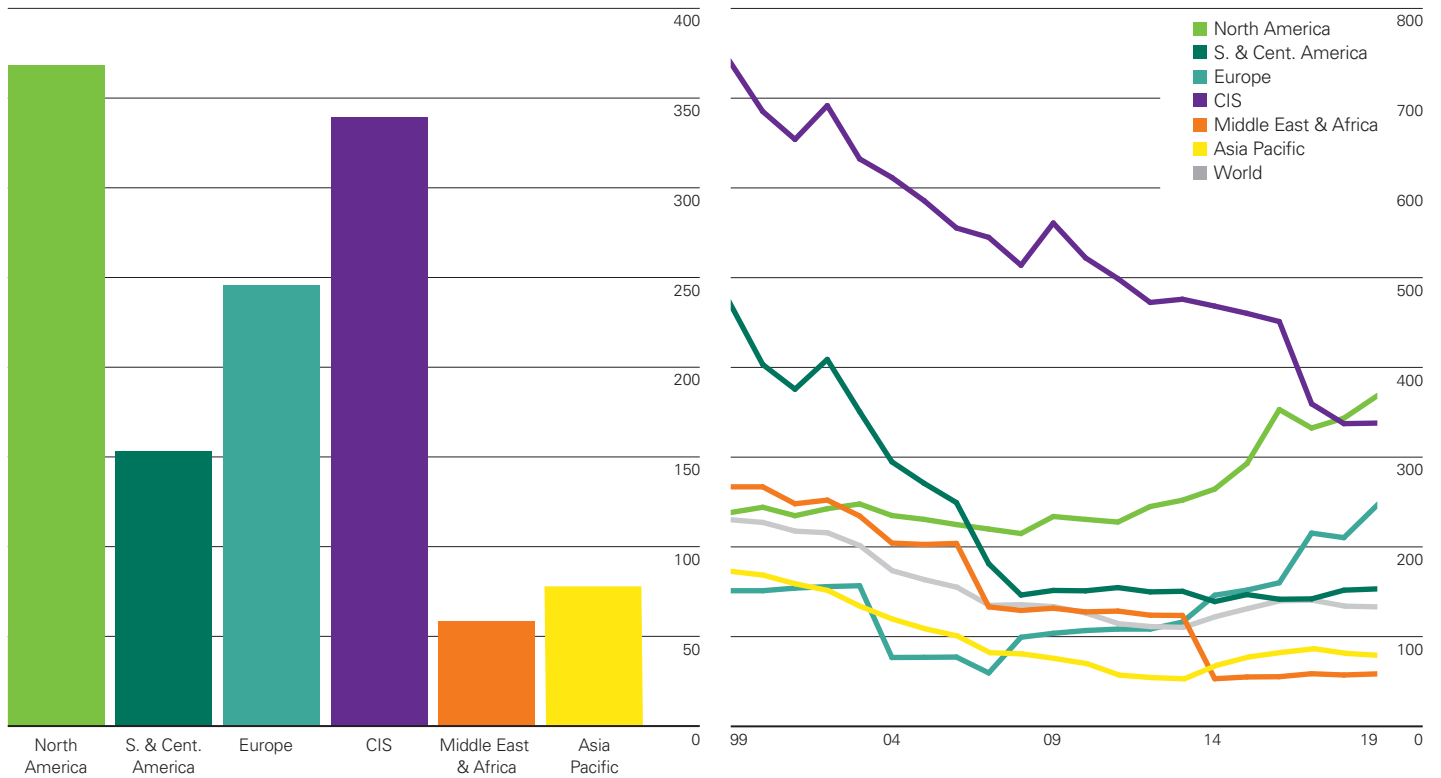
Reserves-to-production (R/P) ratios are calculated excluding other solid fuels in reserves and production.

Shares of total and R/P ratios are calculated using million tonnes figures.

Reserves-to-production (R/P) ratios

Years

2019 by region

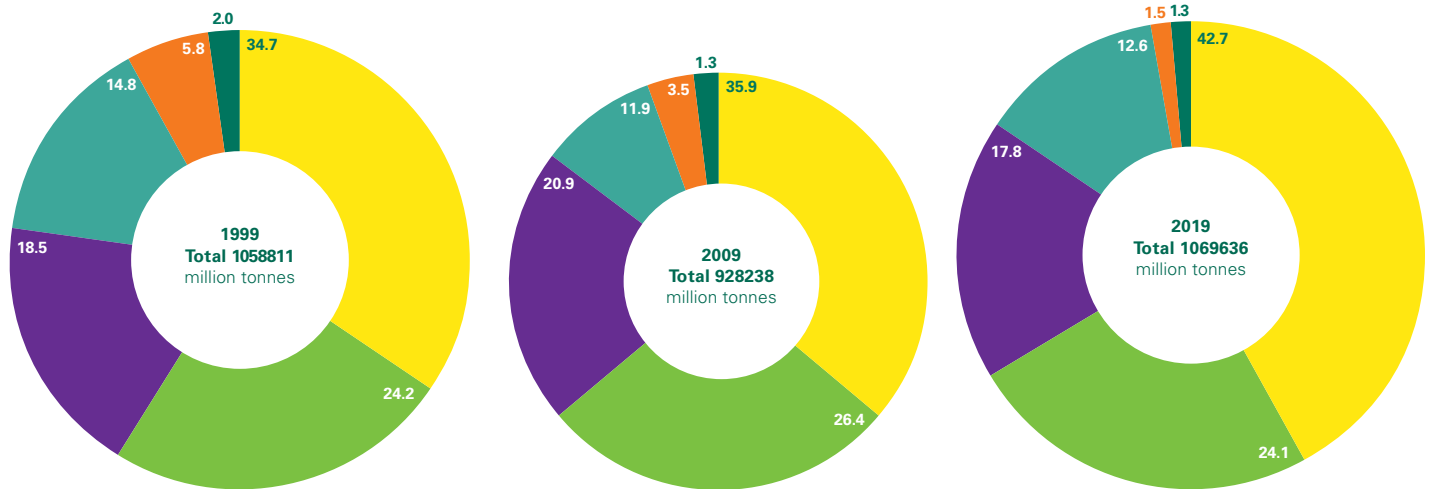


World coal reserves in 2019 stood at 1070 billion tonnes and are heavily concentrated in just a few countries: US (23%), Russia (15%), Australia (14%) and China (13%). Most of the reserves are anthracite and bituminous (70%). The current global R/P ratio shows that coal reserves in 2019 accounted for 132 years of current production with North America (367 years) and CIS (338 years) the regions with the highest ratios.

Distribution of proved reserves in 1999, 2009 and 2019

Percentage

- Asia Pacific
- North America
- CIS
- Europe
- Middle East & Africa
- S. & Cent. America



Coal: Production*

Exajoules	2009	2010	2011	2012	2013	2014	2015	2016	2017	2018	Growth rate per annum		Share 2019	
											2019	2008-18		
Canada	1.39	1.48	1.48	1.49	1.51	1.50	1.35	1.37	1.32	1.18	1.11	-5.1%	-2.3%	0.7%
Mexico	0.25	0.31	0.39	0.31	0.30	0.30	0.29	0.25	0.31	0.28	0.26	-5.4%	-0.4%	0.2%
US	21.67	22.09	22.27	20.72	20.05	20.33	17.99	14.70	15.66	15.40	14.30	-7.1%	-4.3%	8.5%
Total North America	23.32	23.88	24.15	22.52	21.86	22.14	19.63	16.33	17.29	16.85	15.68	-7.0%	-4.1%	9.4%
Brazil	0.13	0.11	0.11	0.12	0.15	0.15	0.12	0.11	0.09	0.10	0.12	24.8%	-3.2%	0.1%
Colombia	2.09	2.14	2.47	2.56	2.46	2.55	2.46	2.60	2.60	2.42	2.37	-2.2%	1.4%	1.4%
Venezuela	0.10	0.08	0.08	0.06	0.04	0.02	0.02	0.01	0.01	0.01	0.01	49.1%	-27.5%	♦
Other S. & Cent. America	0.02	0.01	0.02	0.02	0.07	0.12	0.10	0.08	0.05	0.05	0.03	-27.2%	12.0%	♦
Total S. & Cent. America	2.34	2.35	2.68	2.76	2.72	2.85	2.70	2.81	2.76	2.58	2.54	-1.5%	0.6%	1.5%
Bulgaria	0.19	0.21	0.26	0.23	0.20	0.21	0.25	0.21	0.24	0.22	0.20	-7.6%	0.8%	0.1%
Czech Republic	0.87	0.87	0.88	0.85	0.74	0.71	0.71	0.67	0.64	0.62	0.57	-8.2%	-4.3%	0.3%
Germany	1.94	1.92	1.96	2.00	1.89	1.85	1.79	1.66	1.65	1.58	1.27	-20.0%	-2.8%	0.8%
Greece	0.34	0.31	0.31	0.34	0.28	0.27	0.24	0.17	0.19	0.18	0.13	-25.1%	-6.2%	0.1%
Hungary	0.07	0.07	0.07	0.07	0.07	0.07	0.06	0.06	0.05	0.05	0.06	18.1%	-2.8%	♦
Poland	2.36	2.32	2.33	2.42	2.39	2.26	2.22	2.18	2.08	1.98	1.87	-5.5%	-2.5%	1.1%
Romania	0.27	0.25	0.28	0.27	0.19	0.19	0.20	0.18	0.19	0.17	0.16	-8.4%	-5.2%	0.1%
Serbia	0.31	0.30	0.33	0.31	0.32	0.24	0.30	0.30	0.30	0.28	0.29	3.4%	-1.2%	0.2%
Spain	0.16	0.14	0.11	0.10	0.07	0.07	0.05	0.03	0.05	0.04	†	-97.4%	-14.4%	♦
Turkey	0.73	0.73	0.75	0.71	0.65	0.68	0.54	0.65	0.63	0.69	0.70	0.4%	-0.1%	0.4%
Ukraine	1.35	1.35	1.52	1.64	1.60	1.09	0.72	0.76	0.57	0.59	0.57	-2.3%	-8.7%	0.3%
United Kingdom	0.46	0.48	0.48	0.44	0.33	0.31	0.23	0.11	0.08	0.07	0.06	-16.1%	-17.5%	♦
Other Europe	0.65	0.66	0.66	0.59	0.69	0.66	0.60	0.56	0.57	0.82	0.65	-21.1%	2.5%	0.4%
Total Europe	9.71	9.60	9.94	9.96	9.43	8.60	7.90	7.55	7.25	7.28	6.52	-10.5%	-3.4%	3.9%
Kazakhstan	1.82	1.99	2.08	2.16	2.15	2.05	1.93	1.85	2.02	2.13	2.08	-2.4%	0.6%	1.2%
Russian Federation	5.93	6.32	6.60	7.05	7.25	7.39	7.80	8.12	8.62	9.23	9.20	-0.3%	4.0%	5.5%
Uzbekistan	0.04	0.04	0.05	0.04	0.05	0.05	0.05	0.05	0.05	0.05	0.05	-2.9%	1.5%	♦
Other CIS	0.04	0.04	0.05	0.05	0.06	0.06	0.06	0.07	0.08	0.10	0.10	4.7%	10.7%	0.1%
Total CIS	7.83	8.39	8.77	9.31	9.51	9.55	9.84	10.09	10.77	11.51	11.43	-0.6%	3.3%	6.8%
Total Middle East	0.03	0.03	0.03	0.03	0.03	0.03	0.03	0.04	0.04	0.03	0.03	-	-3.4%	♦
South Africa	5.85	6.03	6.00	6.14	6.08	6.20	5.96	6.01	5.97	5.99	6.02	0.4%	0.2%	3.6%
Zimbabwe	0.05	0.07	0.07	0.04	0.08	0.16	0.12	0.07	0.08	0.10	0.06	-35.0%	9.0%	♦
Other Africa	0.03	0.04	0.05	0.18	0.21	0.24	0.25	0.32	0.59	0.74	0.57	-22.4%	36.9%	0.3%
Total Africa	5.92	6.15	6.11	6.36	6.38	6.59	6.33	6.41	6.64	6.83	6.66	-2.6%	1.3%	4.0%
Australia	10.16	10.49	10.26	11.13	11.97	12.81	12.80	12.83	12.50	13.06	13.15	0.7%	2.9%	7.8%
China	64.39	69.72	77.53	78.44	79.32	78.05	76.43	70.82	73.17	76.58	79.82	4.2%	2.1%	47.6%
India	10.30	10.56	10.50	10.68	10.71	11.28	11.77	11.89	11.99	12.80	12.73	-0.5%	3.0%	7.6%
Indonesia	6.32	6.79	8.72	9.52	11.71	11.30	11.39	11.25	11.38	13.76	15.05	9.4%	8.8%	9.0%
Japan	0.03	0.02	0.03	0.03	0.03	0.03	0.03	0.03	0.03	0.02	0.02	-27.1%	-1.6%	♦
Mongolia	0.28	0.48	0.63	0.59	0.64	0.47	0.46	0.67	0.94	1.04	1.09	4.7%	18.4%	0.6%
New Zealand	0.12	0.14	0.13	0.13	0.12	0.10	0.09	0.07	0.07	0.08	0.08	-5.8%	-4.3%	♦
Pakistan	0.07	0.06	0.06	0.06	0.06	0.06	0.06	0.08	0.08	0.08	0.12	45.9%	0.9%	0.1%
South Korea	0.05	0.04	0.04	0.04	0.03	0.03	0.03	0.03	0.03	0.02	0.02	-9.4%	-7.9%	♦
Thailand	0.20	0.21	0.25	0.20	0.20	0.19	0.16	0.18	0.17	0.16	0.15	-6.1%	-2.4%	0.1%
Vietnam	1.03	1.05	1.09	0.98	0.96	0.96	0.97	0.90	0.90	0.98	1.08	10.2%	0.6%	0.6%
Other Asia Pacific	0.81	0.87	0.93	0.96	0.98	0.99	1.06	1.33	1.14	1.39	1.42	2.2%	4.1%	0.8%
Total Asia Pacific	93.74	100.44	110.16	112.76	116.71	116.29	115.24	110.08	112.41	119.98	124.72	4.0%	2.9%	74.4%
Total World	142.89	150.82	161.84	163.70	166.64	166.05	161.68	153.30	157.16	165.06	167.58	1.5%	1.4%	100.0%
of which: OECD	41.04	41.85	41.92	41.14	40.95	41.86	38.84	35.19	35.66	35.67	33.90	-5.0%	-2.0%	20.2%
Non-OECD	101.86	108.97	119.92	122.56	125.69	124.19	122.84	118.11	121.50	129.39	133.68	3.3%	2.7%	79.8%
European Union	7.02	6.93	7.05	7.03	6.58	6.29	6.05	5.55	5.47	5.28	4.59	-13.2%	-3.4%	2.7%

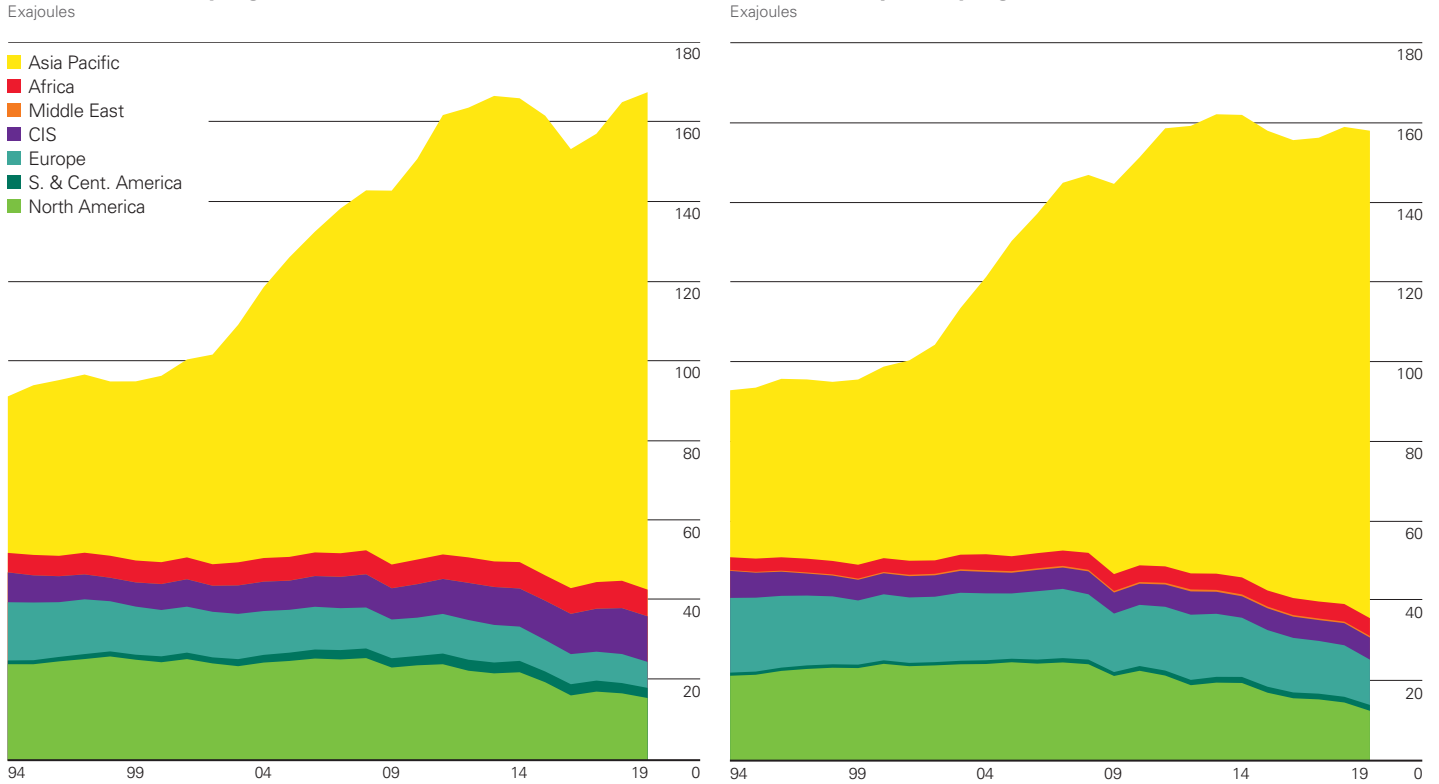
*Commercial solid fuels only, i.e. bituminous coal and anthracite (hard coal), and lignite and brown (sub-bituminous) coal, and other commercial solid fuels. Includes coal produced for coal-to-liquids and coal-to-gas transformations.

†Less than 0.005.

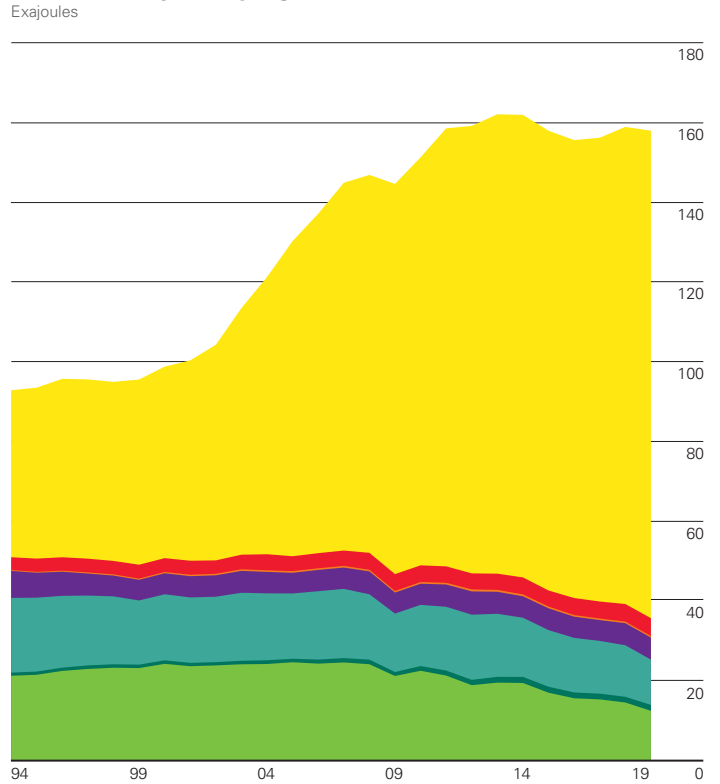
♦Less than 0.05%.

Coal production data expressed in million tonnes is available at bp.com/statisticalreview.

Coal: Production by region



Coal: Consumption by region



World coal consumption fell by 0.6% (-0.9 EJ), its fourth decline in six years. In the non-OECD, there were notable increases in China (1.8 EJ), Indonesia (0.6 EJ) and Vietnam (0.5 EJ), however, growth in India was only 0.3% (0.1 EJ) – its lowest since 2001. OECD demand fell sharply, led by the US (-1.9 EJ) and Germany (-0.6 EJ), to the lowest level in our data series (which goes back to 1965). Global coal production rose by 1.5%, with China and Indonesia providing the only significant increases (3.2 EJ and 1.3 EJ respectively). The largest declines in production also came from the US (-1.1 EJ) and Germany (-0.3 EJ).

Coal prices

US dollars per tonne

