

32. During the term of the Authorization letter, your firm shall ensure that the Solar Power Plant including all the building, structures erected on the Solar Power Land are insured at its own cost against any loss or damage.
33. Your firm shall obtain and renew, if necessary, at its own cost and risk, all necessary permissions, approvals, licenses and permits for the Solar Power Project and shall pay all license and other levies, cess and taxes in respect of the Solar Project Land by reason of their being used for the purpose aforesaid and to observe and perform all local, police, municipal laws and/or policies and rules and regulations in connection with such use. ZR will sign all such documents and make all such applications as may be reasonably required of ZR at the cost of your firm for enabling you to obtain all necessary permissions, licenses and/or approvals for constructing, repairing, running and/or maintaining the plant.
34. Indemnities and limitation of liability: You shall fully indemnify, defend and hold harmless the REMC Ltd./ZR and its officers, servants, agents, against any and all suits, proceedings, actions, demands, claims.
- (a) Any breach by the firm of any of its obligations, covenants, agreement, representations, or warranties set forth in the PPA signed for this project with ZR and this Authorization Letter:
 - (b) Any loss of property, damage to property, personal injury or death occasions to or suffered by any person, to the extent that the damage to or loss of property or the personal injury or death is caused willfully or negligently by firm, and
 - (c) Any breach, violation, or non-compliance by your firm of any applicable laws and/or applicable permits.
35. This Authorization letter is being issued by REMC Ltd. (through ZR) in duplicate. You are requested to sign and return one copy of the Authorization letter to REMC Ltd. office duly accepted & received as acknowledgement within 7 (seven) days of the receipt.

(REMC Ltd.)

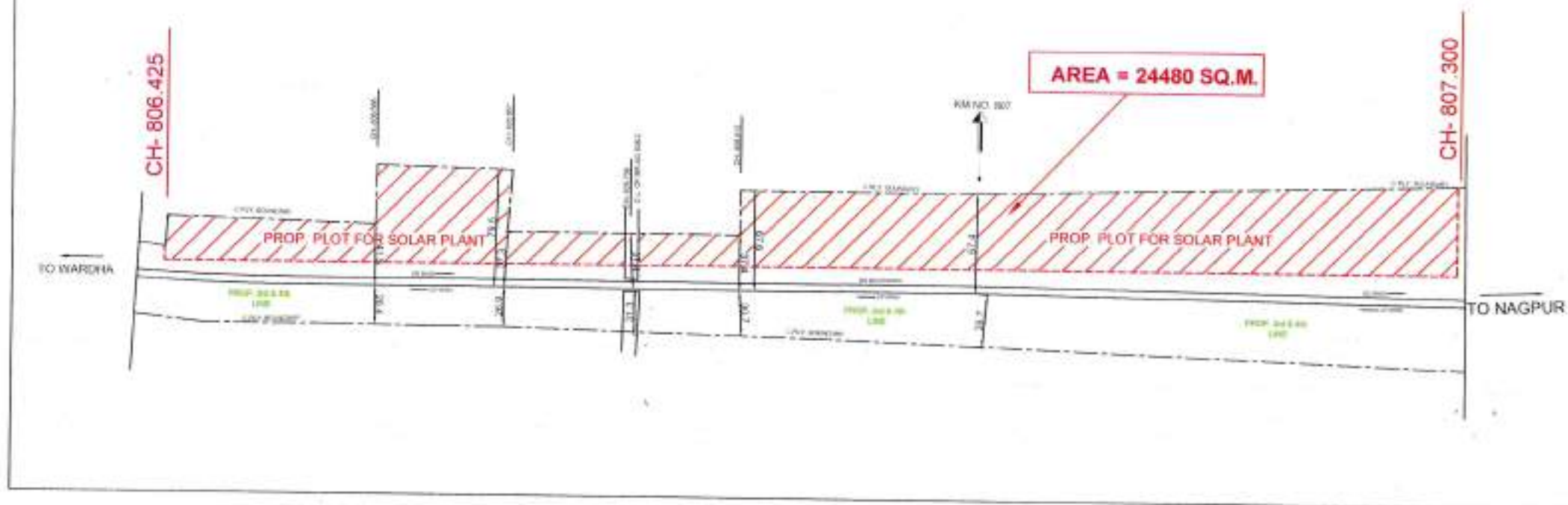
Copy to:-

1. EDEEM/Railway Board, Rail Bhawan, New Delhi – For kind Information.
2. PCEE, Zonal Railway – For information & necessary action please.

**ANNEXURE-M: DETAILED SITE DRAWINGS AS AVAILABLE
WITH INDIAN RAILWAYS**

PROP. LAND FOR SOLAR PLANT AT KM- 806.425 TO 807.300

①



Chavase

10/02/21

प्रमण्डल इंजिनियर (मध्य.)

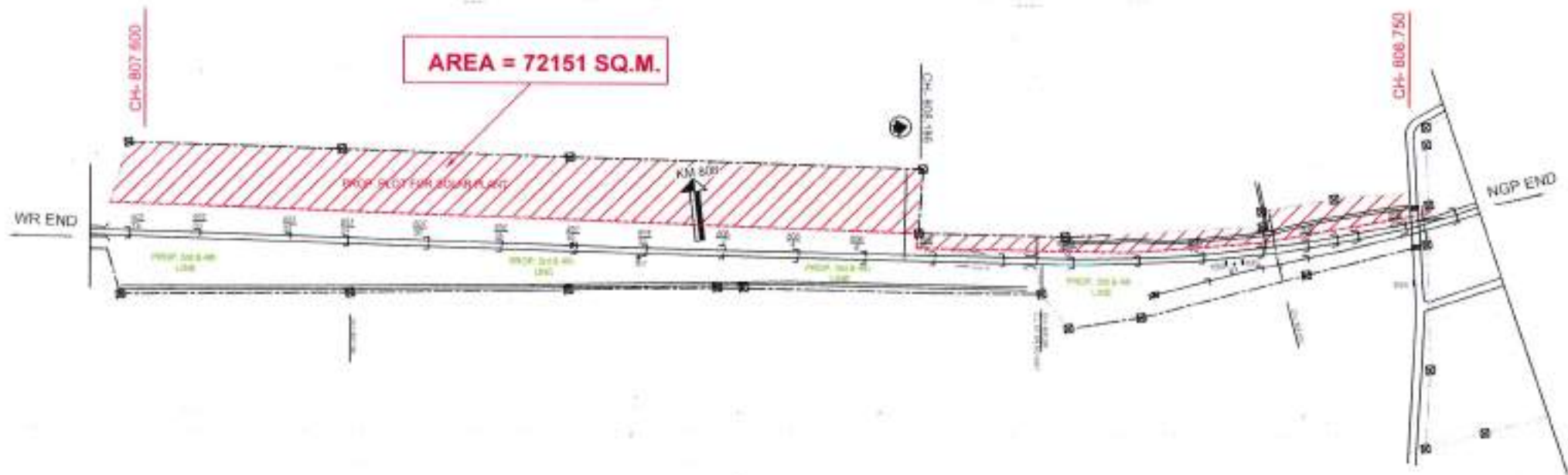
मध्य रेल, नागपुर.

Sr. Divisional Engineer (CTL)

Central Rly. NAGPUR

PROP. LAND FOR SOLAR PLANT AT KM- 807.600 TO 808.750

②



Thamre

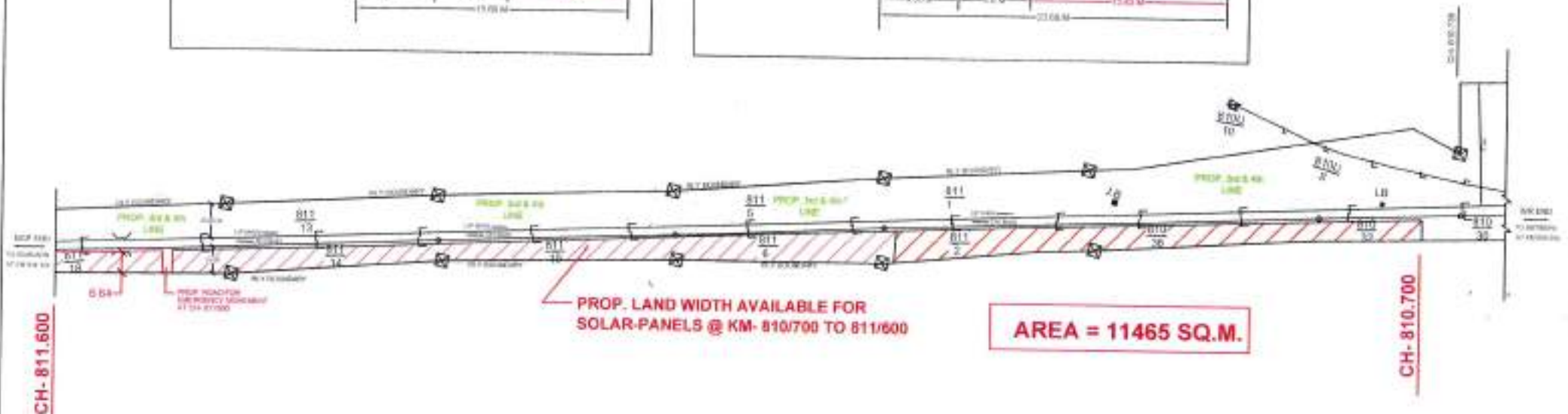
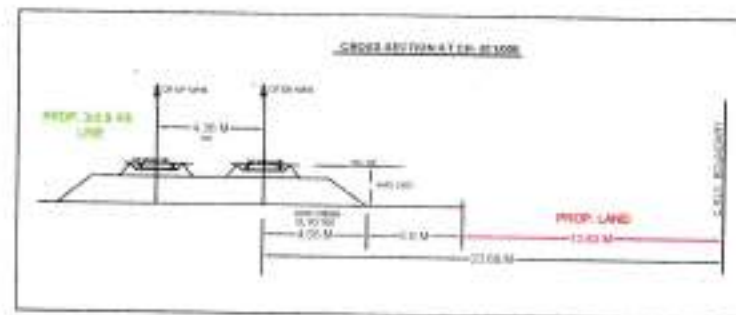
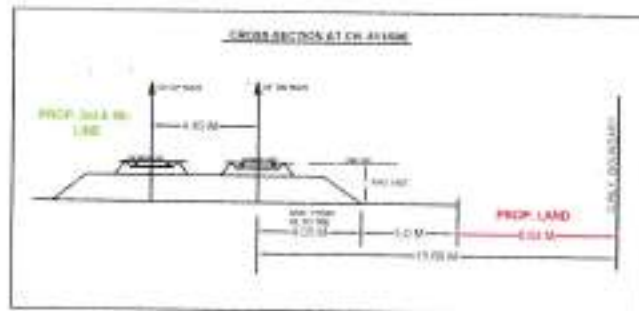
10/02/21

प्रमुख इंजीनियर (मध्य.)

मध्य रेल, नागपुर.

Sr. Divisional Engineer (CTL)
Central Rly. NAGPUR

DETAILS OF LAND WIDTH AVAILABLE ON DN SIDE OF TRACK FOR PROP. INSTALATION OF SOLAR-PANELS BETWEEN GUMGAON-BUTIBORI @ KM- 810/700 TO 811/600 ON DN SIDE



- PROP. LAND WIDTH AVAILABLE FOR SOLAR-PANELS @ KM- 810/700 TO 811/600

AREA = 11465 SQ.M.

CH-810.700

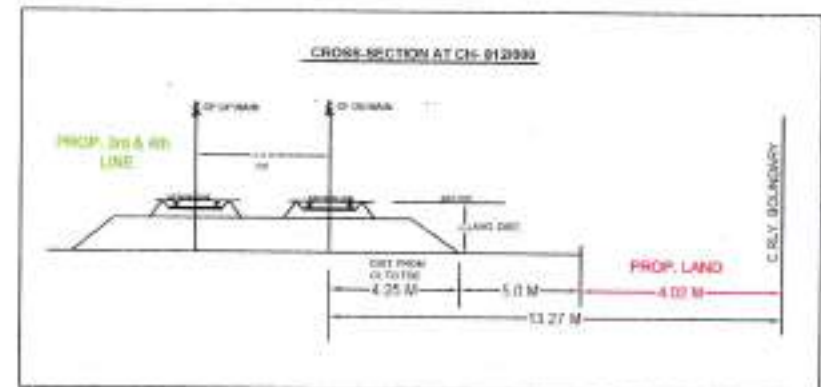
Dr. Khoury

प्रमाणित इतिमिजार (मध्य)
मध्य रेल, नागपुर. 10/02/21

मध्य रेल, नागपुर.

Sd/- Divisional Engineer (CTL)
Central Rly. NAGPUR.

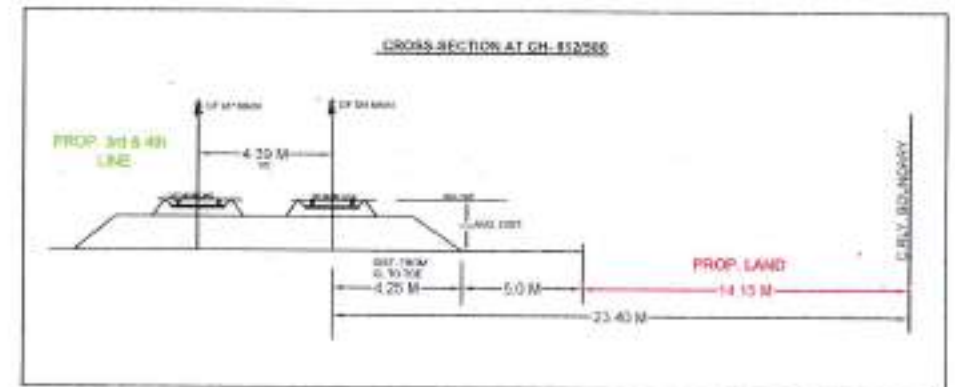
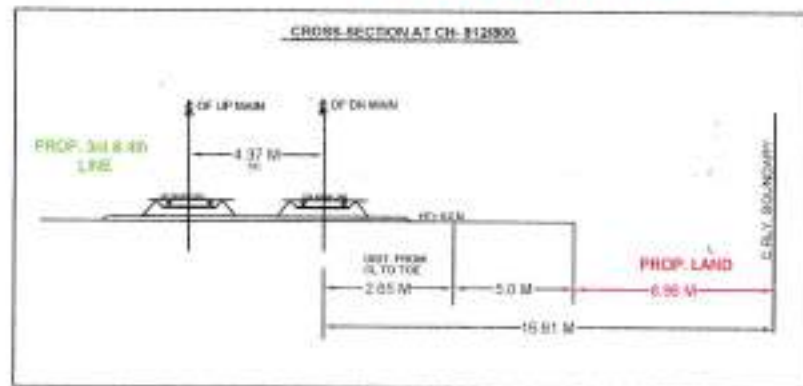
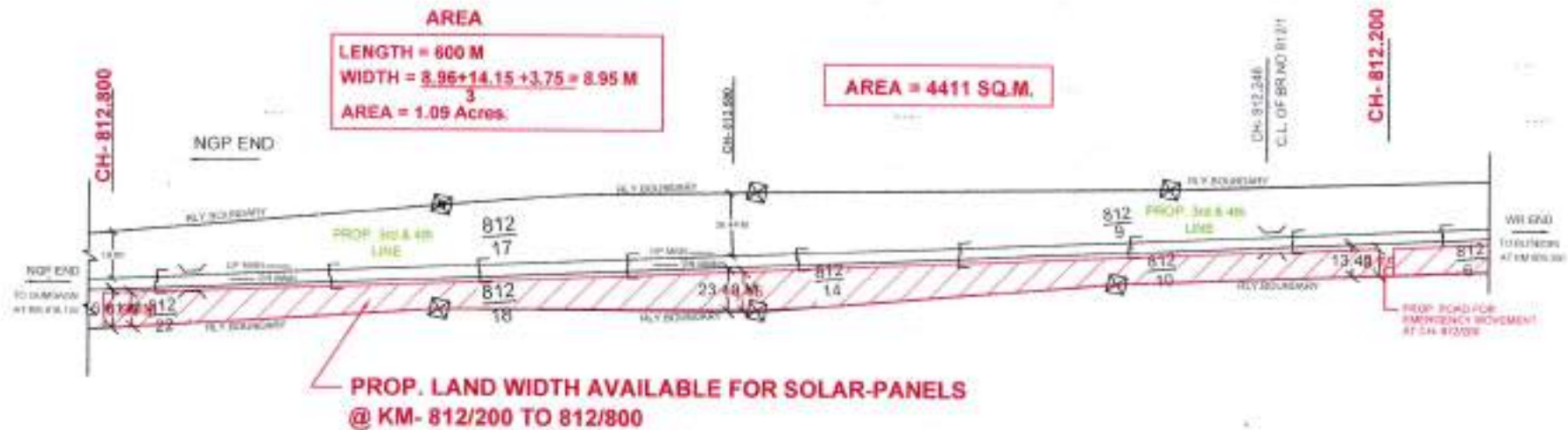
**DETAILS OF LAND WIDTH AVAILABLE ON DN SIDE OF TRACK FOR PROP. INSTALLATION OF
SOLAR-PANELS BETWEEN GUMGAON-BUTIBORI @ KM- 811/600 TO 812/200 (600 M) ON DN SIDE**



Khannu
प्र. मण्डल इंजिनियर (म.व.)
मध्य रेल, नागपुर. 10/02/21
Divisional Engineer (CTL)
Central Rly. NAGPUR

**DETAILS OF LAND WIDTH AVAILABLE ON DN SIDE OF TRACK FOR PROP. INSTALLATION OF
SOLAR-PANELS BETWEEN GUMGAON-BUTIBORI @ KM- 812/200 TO 812/800 (600 M) ON DN SIDE**

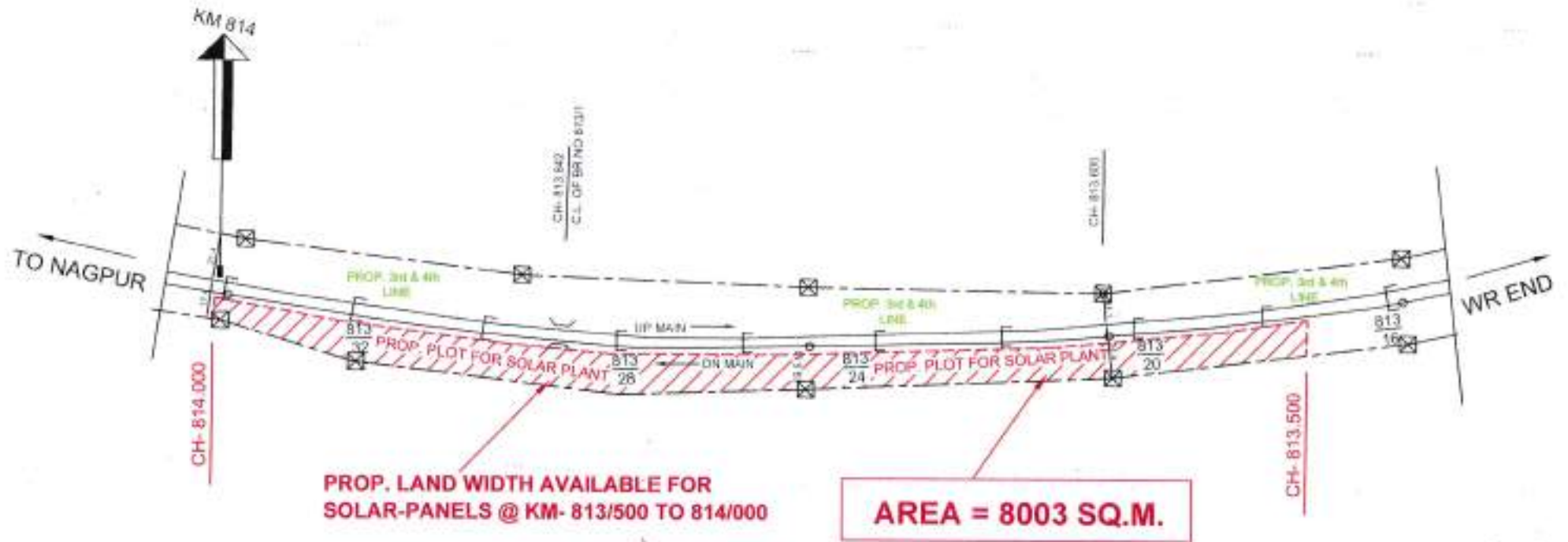
③-III



मण्डल इंजिनियर (मि.वि.)
 मध्य रेल, नागपुर. 10/02/21
 Divisonal Engineer (CTL)
 Central Rly. NAGPUR

③-IV

PROP. LAND FOR SOLAR PLANT AT KM- 813.500 TO 814.000

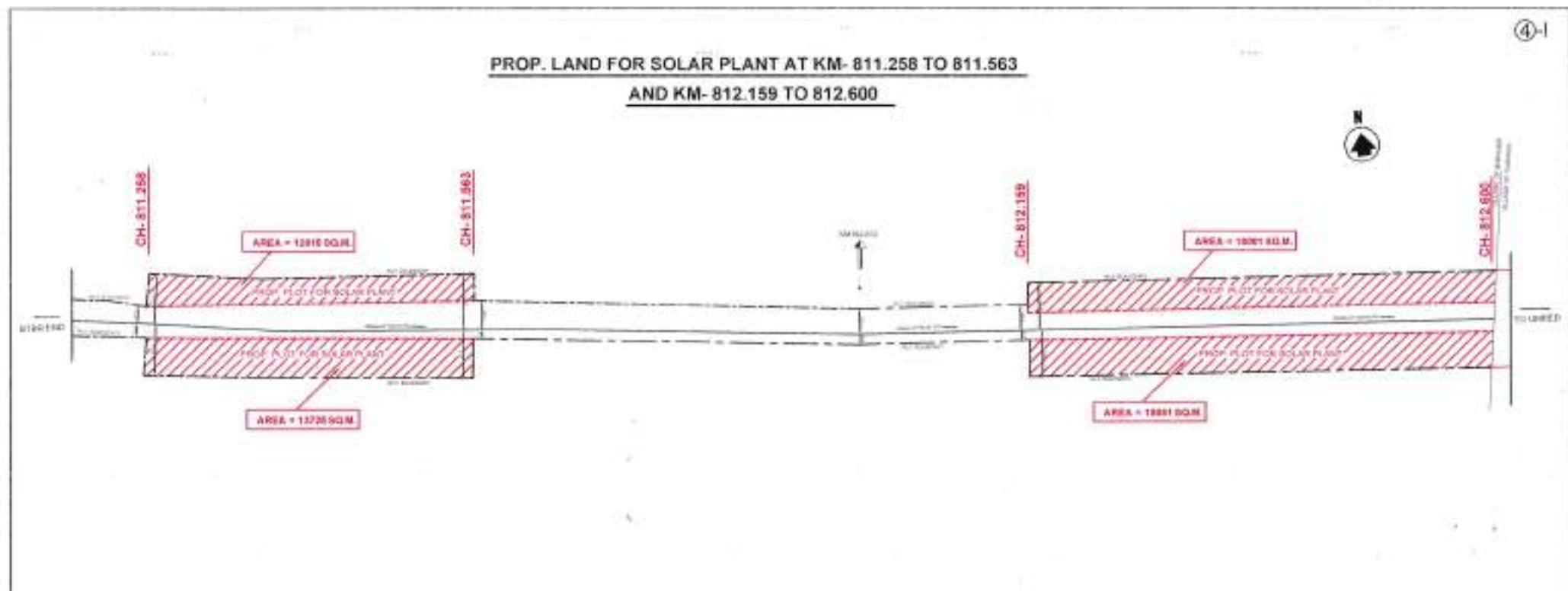


Thamse

10/02/21

प्र. मण्डल इंजिनियर (मध्य.)
मध्य रेल, नागपुर.

अ. Divisional Engineer (CTL)
Central Rly. NAGPUR



Shanve

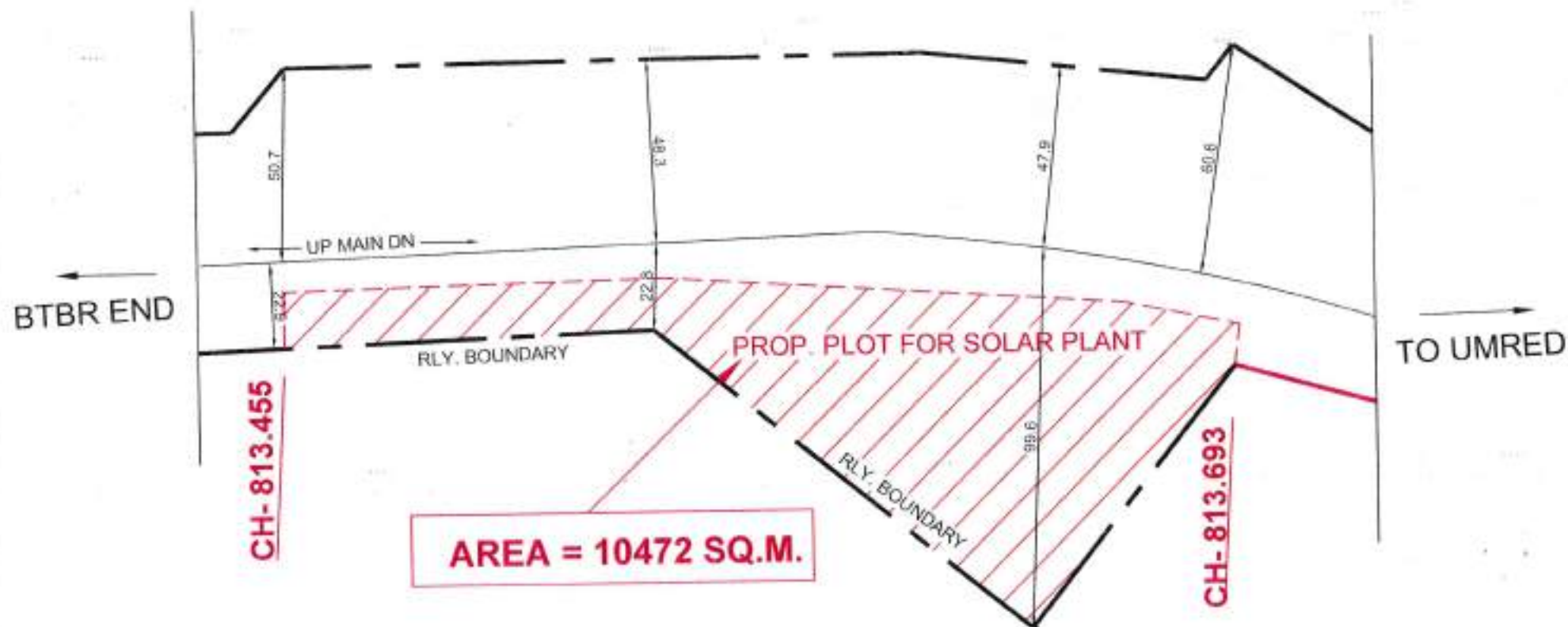
10/02/21

श्री गणेश इन्जिनियर (मध्य.)
मध्य रेल, नागपुर.

38, Divisional Engineer (CTL)
Central Rly. NAGPUR

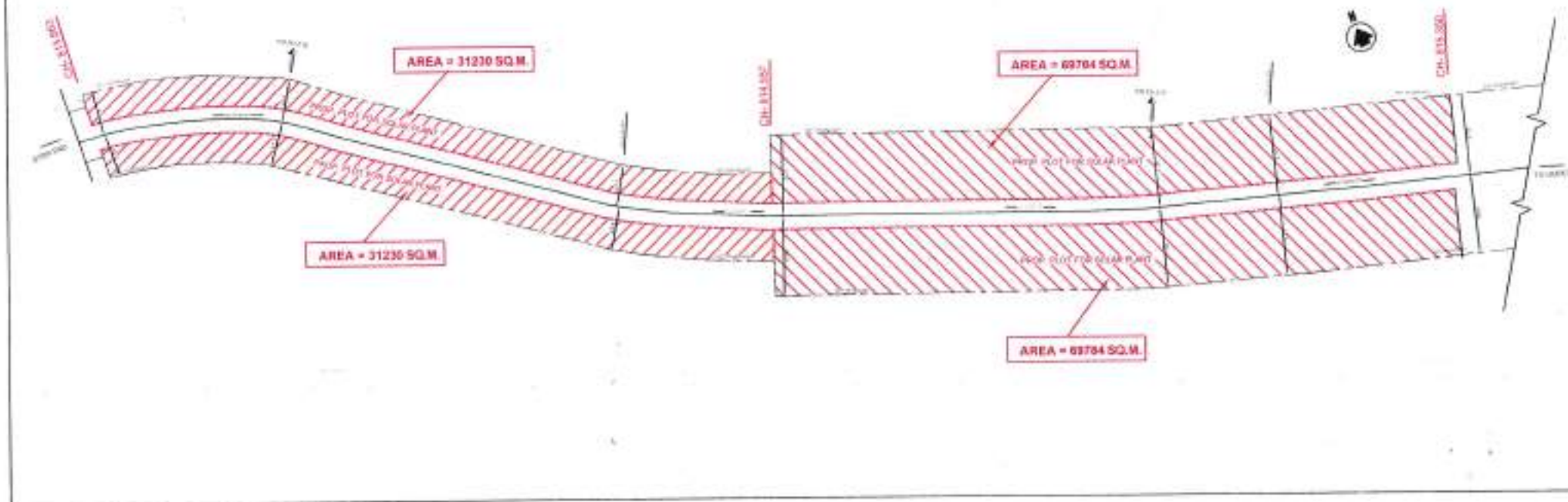
PROP. LAND FOR SOLAR PLANT AT KM- 813.455 TO 813.693

④-II



Thamke
प्रमाणित इन्जिनियर (मुख्य)
मध्य रेल, नागपुर.
10/06/21
Divisional Engineer (CTL)
Central Ry. NAGPUR

PROP. LAND FOR SOLAR PLANT AT KM- 813.863 TO 814.557
AND KM- 814.557 TO 815.350



Thakur

10/02/21

प्र. मण्डल इंजिनियर (मध्य.)

मध्य रेल, नागपुर.

SE, Divisional Engineer (CTL)

Central Rly. NAGPUR